

PRE INSTALATION & PREP CONDITIONS:

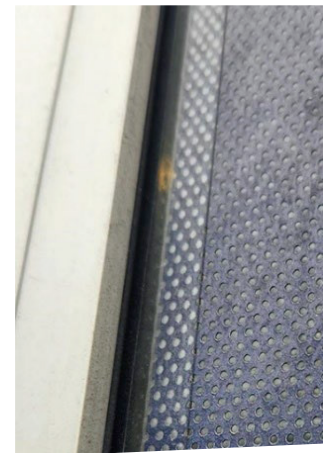
- Before installation it is recommended to attach a small test piece of the Perforated film to the window to help you become familiar to the film's characteristics and adhesion strength.
- Clean windows to remove any dirt, dust, and sealant.
 - A. Use 80%-95% isopropyl alcohol, if desired, to remove any residue allowing it to evaporate completely before installing film. DO NOT use Ammonia or Solvent based Glass Cleaner (i.e., Windex®).
 - B. If the glass has any stuck-on Dirt use Glass scraper tool to remove.
 - C. Use only a lint-less cloth for cleaning.
- Temperature of glass must be moderate — between approx. 50° F and 80° F.
 - A. Do Not install in direct sunlight.
 - B. In cold weather, apply film mid-Day after windows have warmed.
- Generally, the product should be applied dry. If necessary, a small amount of application fluid can be used.
- Prior to installing the Graphic should be trimmed to size leaving ½-1 inch gap from edge of the glass. Do not apply all the way on to glass edge or onto Gasket or Window frame. This leaves room to apply edge seal tape.
- Do not allow the graphic to touch the edges or Frame of the Window. This is where dirt and moisture gather.

INSTALATION USING THE HINGE METHOD:

- Align and level graphic to application surface. Tape the Graphic on left and right edges about 2 feet below top of panel creating a hinge line across the panel. Leaving ½-1 inch gap between graphic and edge of glass
- Flip the top of graphic down and peel liner away from graphic to approx. 12-18 inches exposing the Vinyl's adhesive. Then cut just the released liner away using a utility knife slightly above hinge point. Next sharply fold only the liner and tuck under "toward Glass". Note: You will now have the adhesive exposed and facing out at the top of the graphic.
- Flip the top of the graphic up so the adhesive now faces the window, applying graphic to the glass by working up from hinge point with a soft squeegee. Allows apply from center out using straight (non-arcing), overlapping strokes begin careful not the stretch product.
- Once the top of the graphic is applied remove the tape on the left and right edges.
- Next to finish the panel flip bottom of the graphic up:
 - Reach under the bottom of the graphic to the edge of the liner that was previously trimmed and folded.
 - Peel the liner away from the graphic exposing another two to three feet of the adhesive and apply to surface now working from top down and center out. DO NOT Stretch Film.

BEST PRACTICE FINISHING:

- For Multi panel installs, it recommended to butt end the edges. Do NOT overlap.
- Due to holes, there is less surface area to apply resulting in a greater opportunity for release. If acceptable, follow the best practice of applying 1/2 -1-inch clear tape around the edge of graphic after the film has been installed. Optional, if no edge seal tape is available cut ½ inch strips of CAST Clear laminating film to apply (See Photo).



LAMINATING & SHIPPING TIPS:

- If laminating is desired allow 24 hours for ink to dry before Laminating.
- The best method of transport is to lay graphic flat between protective boards. If it is necessary to roll graphic, please wind onto a 3-inch core to prevent the Liner from tunneling or Graphic from wrinkling.
- Always roll Graphics with the print side facing out.